

Carl's SUPER MARKETS

NASHVILLE
999 Reed St.
Nashville, MI 49073
517-852-1991

DIMONDALE
142 East Road
Dimondale, MI 48821
517-646-0188

Mon.-Sat. 7:30am-8pm
Sun. 9am-6pm

Mon.-Sat. 8am-8pm
Sun. 10am-6pm

Items May Not Be Available at Both Locations

MARCH CHAOS!

USDA Choice
Boneless Beef Chuck Roast
\$4.99 lb.

Boneless Pork Sirloin Chops
Family Pack
\$1.99 lb.

Our Family's Idaho Russet Potatoes
5 lb. bag
2/\$5

Our Family's Navel Oranges
4 lb. bag
\$3.99

General Mills Cereal
Select Varieties
10.6 - 12 oz.

2/\$6

Campbell's Chunky Soup
(18.6 - 19 oz.) or
Microwave Bowls
(15.25 oz.)

2/\$4

Our Family's Hamburger or Hot Dog Buns
8 ct.

2/\$3

Sweet Baby Ray's Barbecue Sauce
(18 oz.), Marinade (16 oz.),
Hot Sauce (5 oz.) or
Dipping Sauce (14 oz.)

2/\$3

Hunt's Tomatoes
(14.5 - 15 oz.); or
Ro-Tel Tomatoes (10 oz.)

2/\$3

Nabisco Family Size Cookies or Crackers
Select Varieties
11.78 - 20.5 oz.

\$4.49

Our Family's Shredded or Chunk Cheese
6 - 8 oz.

2/\$4

Our Family's Butter
Quarters or Spreadable
15 - 16 oz.

\$3.99

Charmin Essentials Bath Tissue
(6 ct. mega rolls); or
Bounty Essentials Paper Towels (4 ct. double rolls)

\$5.99



Ad is effective Wednesday, March 12 thru Tuesday, March 25, 2025.

We reserve the right to limit quantities & are not responsible for pictorial or typographical errors.



Great Grocery Deals & More!

Our Family[®]
Beans
 Black, Butter, Pinto, Cannellini,
 Garbanzo, Great Northern,
 Navy or Red
 15 - 15.5 oz.

5/\$5

Our Family[®]
Salad Dressing
 16 oz.

2/\$5

Hormel Chili
 14 - 15 oz.

2/\$5

Our Family[®]
Cream Soup
 10.5 - 10.75 oz.

4/\$5

Maxwell House
Coffee
 (22 - 33.1 oz.)
 (excludes wake up
 roast and 29.3 oz. decaf);
 or Yuban (27.9 oz.)

\$11.99

Post
Cereal
 Select Varieties
 10 - 14.75 oz.

2/\$7

Brooks
Chili Beans
 15.5 oz.

4/\$5

Ortega
Taco Seasoning
 1 oz.

89¢

Ortega
Mild or Medium Taco Sauce
 16 oz.

2/\$6

Ortega
Taco Shells
 Select Varieties
 4.1 - 5.6 oz.

2/\$4

Our Family[®]
Enchilada Sauce
 10 oz.

\$1.29

Our Family[®]
Ketchup
 24 oz. squeeze

2/\$3

Our Family[®]
Mayo or Whipped Dressing
 30 oz.

\$3.29

Soft 'n Good
White Bread
 (22 oz.) or
 Hillbilly Bread (20 oz.)

\$1.99

Barilla
Gluten Free or Protein Plus Pasta
 or Al Bronzo (8.8 - 14.5 oz.)
 or Pesto (6.2 - 6.5 oz.); or

2/\$5

Our Family[®]
Pasta Sauce
 24 oz.

2/\$4

Annie's
Macaroni & Cheese Dinner
 5.25 - 6 oz.

2/\$3

Chicken of the Sea
Chunk Light Tuna
 (5 oz. can), Wild Caught
 Light Tuna (2.5 oz. pouch)
 or Sardines (3.75 oz.)

4/\$5

Our Family[®]
Flour
 5 lb.

\$2.99

Our Family[®]
Cooking Oil
 40 - 48 oz.

\$4.79

Our Family[®]
Peanut Butter
 40 oz.

\$5.49

Mrs. Butterworth's
or Log Cabin Syrup
 (24 oz.) or
 Mrs. Butterworth's Complete
 Pancake & Waffle Mix (32 oz.)

2/\$7

Our Family[®]
Granola
 11 - 12 oz.

2/\$6

Act II
Microwave Popcorn
 (6 ct.); or
 Angie's Boom Chicka Pop
 (4.4 - 7 oz.)

\$3.49

Ajax
Liquid Dish Soap
 28 oz.

\$2.79

Finish
Ultimate Dishwasher Detergent Tabs
 (28 ct.) or
 Quantum (36 ct.)

\$9.99

Our Family[®]
Liquid Laundry Detergent
 50 oz.

\$3.99

Our Family[®]
Fabric Softener Dryer Sheets
 40 ct.

2/\$4

Ziploc
Freezer Bags
 2 Gallon (10 ct.) or
 Gallon or Quart (38 ct.),
 Slider Freezer Bags: Gallon
 (24 ct.) or Quart (34 ct.) or
 Slider Storage Bags: Gallon
 (32 ct.) or Quart (42 ct.)

\$5.99

Our Family[®]
Coated White Paper Plates
 100 ct.

\$4.79

Frozen Favorites

Jimmy Dean Breakfast Delights Sandwiches

(16 - 19.2 oz.), Breakfast Sandwiches (4 ct. or 10 ct. Snack Size) or Skillet (16 oz.)

\$5.99



Tyson Breaded Chicken

(20 - 28.05 oz.) or Grilled & Ready (22 oz.)

\$7.49

McCain Frozen Potatoes or Onion Rings

14 - 22 oz.

2/\$7



Our Family Waffles or Pancakes

10 - 12 ct.

2/\$4



Our Family Steamable Vegetables or Blends

Select Varieties 10 - 14 oz.

2/\$4



Hungry-Man Dinners

14.5 - 16 oz.

\$3.99



TombStone Original Pizza

(18.4 - 21.6 oz.); or DiGiorno Classic Crust Pepperoni (19.3 oz.)

2/\$9



Dean's Country Fresh Ice Cream

1.5 qt.

\$3.99



Dairy Delights

Yoplait Original or Light Yogurt

(6 oz.) or Whips! (4 oz.)

4/\$3



Our Family Cream Cheese

8 oz. box

2/\$4



Starbucks Creamer

(28 oz.); or Coffee mate

Natural Bliss (32 oz.)

\$4.99



Our Family Sour Cream or French Onion Dip

16 oz.

\$1.99



Our Family Natural Sliced Cheese

6 - 8 oz.

2/\$6



Our Family Cottage Cheese

16 oz.

2/\$5



Simply Orange, Apple or Cranberry Juice

52 oz.

\$4.29



We Carry Our Family Milk Products



Additional Savings!

Kellogg's Family Size Town House or Club Crackers or Toasteds Party Pack

12 - 20.7 oz.

\$5.49



Snyder's Pretzels

10 - 16 oz.

2/\$6



Ruffles Potato Chips

(7.25 - 8.5 oz.) or Ridge Twists (5.5 oz.)

\$4.49



Doritos

(9 - 10.75 oz.) or 3D Crunch (6 - 7.25 oz.)

\$4.49



TopCare Triple Antibiotic Cream or Ointment

5 - 1 oz.

\$3.49



TopCare Multi-Purpose Contact Solution

12 oz.

\$3.99



TopCare Cold Remedy

Cheivable Tablets 25 ct.

\$6.99



TopCare Acetaminophen Extra Strength Pain Relief or Low Dose Aspirin

500 ct.

\$7.99



Health & Home

Beverages



7-Up Products

2 liter (plus deposit)

2/\$4



Michelob Ultra

15 pk., 12 oz. cans (plus deposit)

\$15.49



Coca-Cola Products

(2 liter) (plus deposit) or BodyArmor (28 oz.)

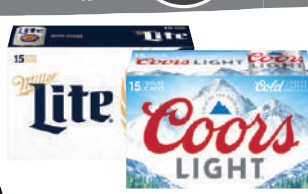
2/\$6



Miller Lite or Coors Light

15 pk., 12 oz. cans (plus deposit)

\$12.99



Pepsi Products

(6 pk., 16.9 oz. btl.) (plus deposit) or Propel Fitness Water (6 pk., 16.9 oz. btl.)

\$4.99



Our Finest Meats

USDA Choice
**Boneless Beef
 Chuck Steak**
 Family Pack
\$5.99
 lb.

Fresh, Natural, Grade A
**Whole
 Chicken**
\$1.49
 lb.


Corned Beef Brisket
 Flat Cut
\$5.99
 lb.



Natural, Pork Loin
Baby Back Ribs
 Previously Frozen; Single Pack
\$3.49
 lb.


Sauerkraut
 32 oz.
\$1.99

**Boneless Pork
 Sirloin Chops**
 Family Pack
\$1.99
 lb.

 
**Chicken
 Thighs**
\$1.99
 lb.

Premium Hardwood Smoked
**Little Town Jerky
 Company Hardwood
 Beef Sticks**
 6 oz. 
\$3.99

**Kentucky Legend
 Ham**
 Steak, Diced or Cubed
 8 oz.
2/\$7

**Land O'Frost
 Premium
 Lunch Meat**
 Assorted Varieties
 16 oz.
\$6.79

**Smithfield
 Marinated Whole
 Pork Tenderloins,
 Loin Filets or
 Roasts**
 Assorted Varieties
 18.4 - 23 oz.
\$6.99

**Smithfield
 Original or
 Thick Cut Stack
 Bacon**
 Assorted Varieties
 22 - 24 oz.
\$7.99

**Eckrich
 Meat Franks**
 Assorted Varieties (12 oz.);
 Bologna or Cotto Salami
 (10 - 12 oz.)
 (excludes beef)
2/\$4

**Buddig
 Thin Sliced
 Lunch Meat**
 Assorted Varieties
 2 oz.
88¢

**Simply
 Potatoes
 Side Dishes**
 Assorted Varieties
 24 oz.
2/\$6



Select Seafood

**SeaPak
 Battered or
 Breaded Fish
 Fillets or Shrimp**
 Assorted Varieties
 Calamari or Clam Strips
 8.2 - 16 oz.
\$5.99



**TransOcean
 Imitation
 Crab**
 Assorted Varieties
 8 oz.
2/\$5



Produce Specials

**Fresh
 Green Cabbage**
79¢
 lb.




**Idaho Russet
 Potatoes**
 5 lb. bag
2/\$5

Extra Large
 Red
Seedless Grapes
\$2.99
 lb.


**Sweet Grape
 Tomatoes**
 (pint) or Sunset
 Mini Cucumbers (16 oz.)
2/\$5


**Gala
 Apples**
 3 lb. bag
\$3.49

**Large
 Tropical Mangos
 or Grapefruit**
 each
2/\$3

**Peruvian
 Sweet
 Onions**
 2 lb.
\$2.99

**Fresh Express
 Caesar Salad Kits**
 Assorted Varieties
 (Includes Chopped Caesar Kits)
 (9.3 - 10.4 oz.) or Dole Caesar
 Kits (10.2 - 10.8 oz.)
\$3.99

Deli & Bakery

**Deli Sliced
 Cojack Cheese**
\$5.99
 lb.

**Deli Sliced
 Turkey
 Breast**
\$7.99
 lb.




Donut Holes
 11 - 12 oz.
\$3.99

**Sliced
 Loaf Cakes**
 14 - 16 oz.
\$5.99

**Yucatan
 Guacamole**
 Selected Varieties
 8 oz.
\$5.99


**Mini
 Cupcakes**
 10 oz., 12 ct.
\$4.49